

A weathered wall with peeling paint and graffiti. The wall is covered in a mix of white, grey, and brown tones, with significant areas of peeling paint and exposed brick. A large, vibrant pink graffiti piece is the central focus, featuring a stylized, abstract shape that resembles a face or a mask. The pink paint is thick and drips down the wall. In the bottom right corner, there is a small, faded red graffiti tag that reads "SWI" and "AT YU".

Fresh.
Local.
Contemporary.

SWI
AT YU
AND EX



Stacey Piwinski, *The Left Behind*, 2015

Cherie Clinton and Marie Craig, co-directors

FOUNTAIN STREET FINE ART exhibits contemporary work by twenty emerging and mid-career artists in our expansive main gallery on the ground floor of an historic industrial building in Framingham, MA. We also showcase a broader community of artists within our smaller gallery. We bring fresh, local art into many hearts and hands and foster connections between artists and art-lovers by hosting solo shows, national juried shows, collaborative projects, and installations.



59 Fountain Street Framingham, MA 01702
508.879.4200 Th-Su 11-5 and by appointment



Sarah Alexander

fsfaboston.com



“Reoccurring patterns in nature have always fascinated me. I have recently been examining tangled vines, neurons, and wild grasses to investigate the repeating arrangements.”

Sarah Alexander



Previous: *Dissonance*, watercolor on canvas, 40 x 30"

Above: *Undertow*, mixed media watercolor on canvas, 30 x 40"



59 Fountain St, Framingham, MA 01702 508.879.4200
Th-Su 11-5 and by appointment fsfaboston.com



Lisa Barthelson

fsfaboston.com

“Unconventional materials in combination with traditional processes fuel my work and offer the creative challenges that I relish and embrace.”

Lisa Barthelson



Previous: *undercurrents remix 2, family debris series, mixed media monoprint on bfk paper with collage and thread, 46 x 46"*
Above: *undercurrents remix 2, family debris series (detail)*



59 Fountain St, Framingham, MA 01702 508.879.4200
Th-Su 11-5 and by appointment fsfaboston.com



Brenda Cirioni

fsfaboston.com



“My method of layering and juxtaposing disparate materials draws attention to the multiplicities and mysteries of nature and life.”

Brenda Cirioni



Previous: *Sea*, painting mixed media, 40 x 30"

Above: *Choice*, painting mixed media, 24 x 24"



59 Fountain St, Framingham, MA 01702 508.879.4200
Th-Su 11-5 and by appointment fsfaboston.com



C. Clinton

fsfaboston.com



“Within my current work is a developing story about memory, reflection and the passage of time. This story is still unfolding, the full meaning is part mystery, part time capsule, a bit autobiography with a dash of Grimm’s fairytale around the edges.”

C. Clinton

Previous: Woodland Water Flood II,
acrylic on canvas, 48 x 30”

Above: Woodland Water Reflections 6,
acrylic on panel, 24 x 14”



59 Fountain St, Framingham, MA 01702 508.879.4200
Th-Su 11-5 and by appointment fsfaboston.com



Marie Craig

fsfaboston.com



“Why do I take pictures of busted windows and creepy abandoned places and objects?”

Because of the vigor and life these things once had.”

Marie Craig



Previous: *Remainder* (New South Wales), archival photograph on aluminum, 24 x 24 x 1”

Above: *Itsy Bitsy Spider*, archival photograph on aluminum, 16 x 16 x 1.5”



59 Fountain St, Framingham, MA 01702 508.879.4200
Th-Su 11-5 and by appointment fsfaboston.com



Denise Driscoll

fsfaboston.com



*"I explore interconnection
and participation in
the invisible social and
physical patterns that
influence and shape us."*

Denise Driscoll



Previous: *Circles 30 (Elemental)*, acrylic on four panels, 72 x 72"

Above: *Circles 34*, acrylic on panel, 24 x 24"



59 Fountain St, Framingham, MA 01702 508.879.4200
Th-Su 11-5 and by appointment fsfaboston.com



Nan Hass Feldman

fsfaboston.com



"I create my real environments or those of friends, and places I have been to, through my screen of selective seeing, playful details, heightened color, and bits of fantasy."

Nan Hass Feldman



Previous: *Living Room in Paris*, oil on panel, 20 x 16"

Above: *Dusk Over Nafplio*, oil on panel, 24 x 24"



59 Fountain St, Framingham, MA 01702 508.879.4200
Th-Su 11-5 and by appointment fsfaboston.com



Sara Fine-Wilson

fsfaboston.com



*"I am interested in
sculpturally mapping time
and creating a sense of reach."*

Sara Fine-Wilson



Previous: *Rickety*, stoneware and porcelain, 14 x 18 x 12"

Above: *Stack*, stoneware and porcelain, 12 x 12 x 8"



59 Fountain St, Framingham, MA 01702 508.879.4200
Th-Su 11-5 and by appointment fsfaboston.com



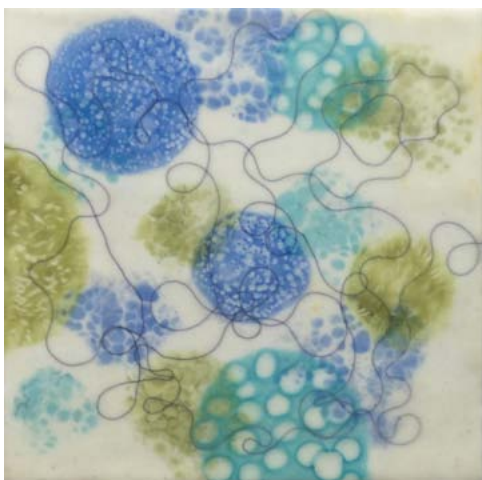
Kay Hartung

fsfaboston.com



*"I am exploring the connections
between science and art; conscious of
the profound effects that these minute
biological forms have on the universe."*

Kay Hartung



Previous: *Bio Fusion 10*, encaustic and mixed media, 20 x 20"

Above: *Bio Bloom 9*, encaustic and mixed media, 16 x 16"



59 Fountain St, Framingham, MA 01702 508.879.4200
Th-Su 11-5 and by appointment fsfaboston.com



Iris Osterman

fsfaboston.com



“One need only look to the Zen artists, their love of the natural world and their ability to bring the spirit of that world to life with a simple brush stroke, to understand the ‘notes’ of an image that is spare but truly felt.”

Iris Osterman



Previous: *Sylvan Red*, Oil, 48 x 54"

Above: *Lost, Going East*, Oil/Encaustic, 42 x 42"



59 Fountain St, Framingham, MA 01702 508.879.4200
Th-Su 11-5 and by appointment fsfaboston.com



Pat Paxson

fsfaboston.com



“Developing my on-going long-term fascination with improvisational processes and psychological dynamics, my paintings suggest meanings without pinning down specific narratives.”

Pat Paxson



Previous: *Surprise*, acrylic on canvas, 24 x 30"

Above: *Swoosh*, acrylic on canvas, 24 x 30"



59 Fountain St, Framingham, MA 01702 508.879.4200
Th-Su 11-5 and by appointment fsfaboston.com



Roy Perkinson

fsfaboston.com



"I am drawn to a scene that has an underlying sense of geometry and combination of colors that I judge to contain the possibility of delicious harmonies."

Roy Perkinson

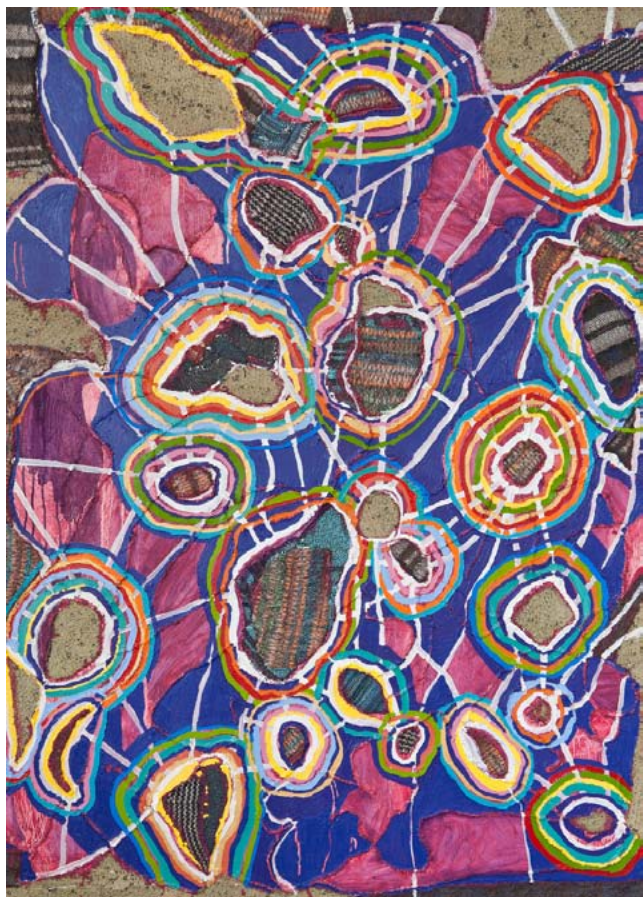


Previous: *Clouds Over Frenchman Bay*, oil on canvas, 30 x 40"

Above: *Columbia River, Late Afternoon*, oil on canvas, 20 x 24"



59 Fountain St, Framingham, MA 01702 508.879.4200
Th-Su 11-5 and by appointment fsfaboston.com



Stacey Piwinski

fsfaboston.com



*“Packed with color and emotion,
the Energy Healers series takes the
remnants of my handwoven fabrics
and incorporates them into paintings
with new beginnings.”*

Stacey Piwinski



Previous: *Higher Awareness*, handwoven fabric and oil on canvas, 48 x 36"

Above: *The Gentle Pull of The Moon*, handwoven fabric and oil on canvas, 48 x 36"



59 Fountain St, Framingham, MA 01702 508.879.4200
Th-Su 11-5 and by appointment fsfaboston.com



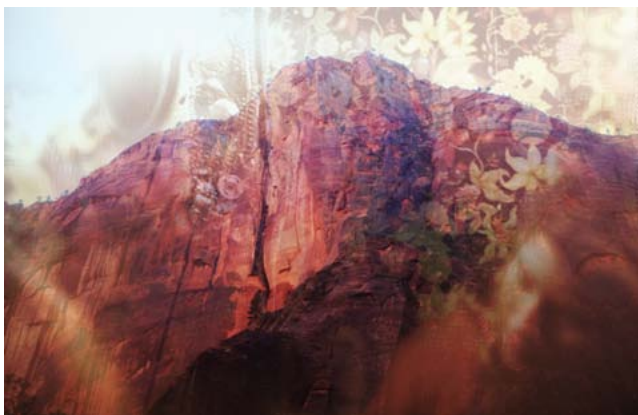
Cory Munro Shea

fsfaboston.com



*“Layered with surreal
American landscapes,
my portraits of young women
reveal a delicate melding
of vulnerability and confidence.”*

Cory Munro Shea



Previous: *Northeast Campfires*, digital photography, 8 x 10"

Above: *Zion*, digital photography, 8 x 10"



59 Fountain St, Framingham, MA 01702 508.879.4200
Th-Su 11-5 and by appointment fsfaboston.com



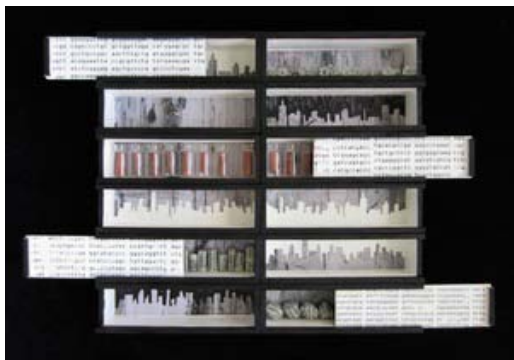
Tracy Spadafora

fsfaboston.com



“...the obscuring, deconstructing, and preserving of images in wax helps me to address a complex and shifting relationship between man, his biological roots, and the shaping of our natural environment.”

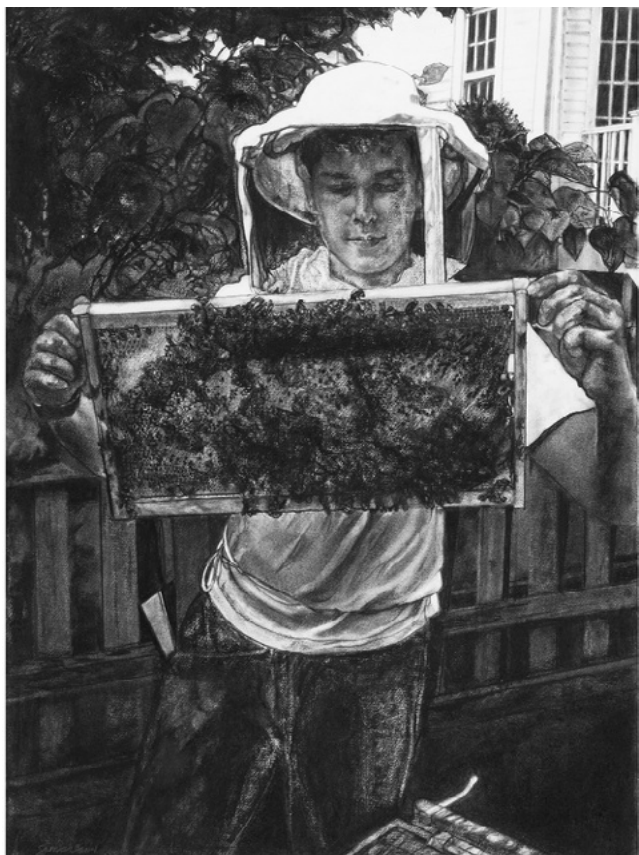
Tracy Spadafora



Previous: Collection (Part 1)
Above: Vestige (Part 5)



59 Fountain St, Framingham, MA 01702 508.879.4200
Th-Su 11-5 and by appointment fsfaboston.com



Mary Spencer

fsfaboston.com



“Drawing conveys an emotional quality, a feel beyond the capture of a camera lens. From prehistoric marks on cave walls to graffiti on cement walls, erasures and blending on paper, the hand charges an image with energy, beauty.”

Mary Spencer



Previous: Seth with Honeybees, charcoal on rag paper

Above: Homage to Margaret Bourke-White, charcoal on rag paper



59 Fountain St, Framingham, MA 01702 508.879.4200
Th-Su 11-5 and by appointment fsfaboston.com



Joel Moskowitz

fsfaboston.com



“I paint one Hebrew letter with its corresponding Arabic letter, in peaceful coexistence on the page, envisioning a future when Arab and Jew will live peacefully side by side. ”

Joel Moskowitz



Previous: Zayin / Zay

Above: Dalet / Dal



59 Fountain St, Framingham, MA 01702 508.879.4200
Th-Su 11-5 and by appointment fsfaboston.com



Leslie Zelamsky

fsfaboston.com



“My work evolves from many layers of material and imagery that work together to create the final piece.”

Leslie Zelamsky



Previous: *Solace*, Mixed Media, 30 x 30"

Above: *Reintegration*, Wood, 33 x 48 x 38"



59 Fountain St, Framingham, MA 01702 508.879.4200
Th-Su 11-5 and by appointment fsfaboston.com